



Light efficiency:

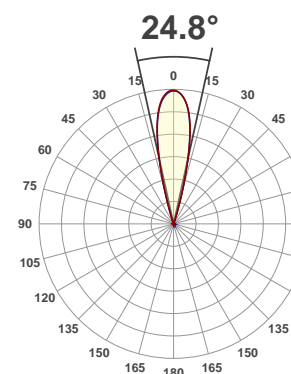
53 Lumen/Watt

Light quality:

CRI: 88.6

Color temperature:

5731 K



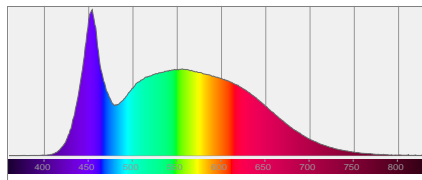
Product name:
Par Z100 5K

Test:
25deg

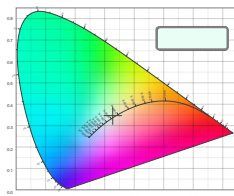
Date:
10/2/2017

Output: 5597 lm Power consumption: 106 W Peak: 35142 cd

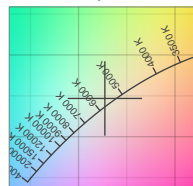
Spectral distribution



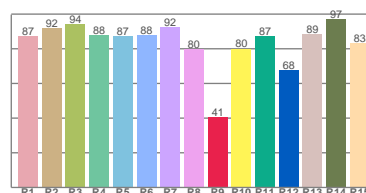
Color coordinates



Zoom color point

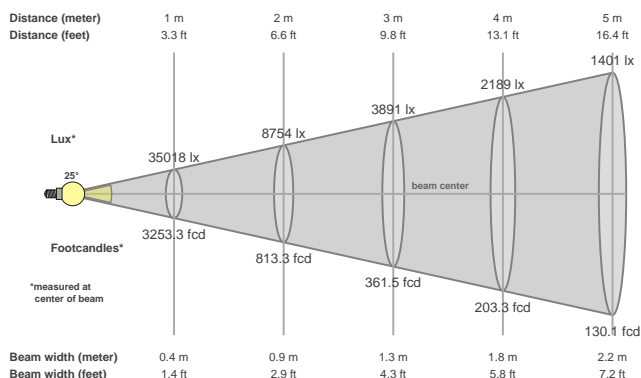


CRI R values



Color temperature	Color rendering index	Red component	Color fidelity	Color gamut	Color quality scale	Color coordinate cie 1931	Color coordinate cie 1931	Color coordinate	Color coordinate	Color diviation from black body
CCT	CRI	CRI R9	TM30 Rf	TM30 Rg	CQS	x	y	u	v	Δuv
5731 K	88.6	40.7	87.0	96.4	87.5	0.327	0.347	0.201	0.320	0.0020

Beam details



Beam angles

Beam angle 50%	Field angle 10%	Cutoff angle 2,5%
24.8°	34°	37.9°

Beam intensities

Peak intensity	Int. ratio in 120° cone	Int. ratio in 90° cone
35142 cd	97.8%	97.3%

Power

Power	Power factor	Power frequency
106 W	0.99	59.9 Hz

Nominal voltage	Voltage	Current
230 V	116 V	0.916 A

Beam intensities from 1-20m

1m	2m	3m	4m	5m	6m	7m	8m	9m	10m	11m	12m	13m	14m	15m	16m	17m	18m	19m	20m
3.3ft	6.6ft	9.8ft	13.1ft	16.4ft	19.7ft	23ft	26.2ft	29.5ft	32.8ft	36.1ft	39.4ft	42.7ft	45.9ft	49.2ft	52.5ft	55.8ft	59.1ft	62.3ft	65.6ft
35018lx	8754lx	3891lx	2189lx	1401lx	973lx	715lx	547lx	432lx	350lx	289lx	243lx	207lx	179lx	156lx	137lx	121lx	108lx	97lx	88lx
3253.3fcd	813.3fcd	361.5fcd	203.3fcd	130.1fcd	90.4fcd	66.4fcd	50.8fcd	40.2fcd	32.5fcd	26.9fcd	22.6fcd	19.3fcd	16.6fcd	14.5fcd	12.7fcd	11.3fcd	10fcd	9fcd	8.1fcd